

FOR CHARTER

ACQUA CHIARA



Please note this is a render. Professional photographs of this area will be available soon.

BUILDER	COLUMBUS
BUILT	2025
LENGTH	47M / 154' 2"
DRAFT	2.47M / 8' 1"
BEAM	9.10M / 29' 10"
CABINS	5
GUESTS	10
CREW	9
SPEED	14.5 KNOTS / 15.5 MAX

CRUISING AREA SUMMER	WEST MEDITERRANEAN
CRUISING AREA WINTER	PLEASE ENQUIRE
WEEKLY RATE HIGH	€ 330,000
WEEKLY RATE LOW	€ 300,000

EXPERT'S VIEW

"As the debut model in Columbus Yachts' Atlantique 47 series, ACQUA CHIARA redefines relaxed luxury with her beach-club lifestyle, dual pools, and expansive indoor-outdoor living spaces. She offers flexible accommodation for up to 10 guests, including a full-beam Master suite on the main deck, and is ideal for families or friends looking to explore in comfort and style. With a 3,400NM range, zero-speed stabilisers, and a dedicated crew of 9, she's designed for smooth, immersive cruising wherever your journey takes you"

Yachts offered are subject to availability. The particulars are believed to be correct but are not guaranteed and may not be used for contractual purposes. Specification provided for information only.

KEY FEATURES

HULL N.1 OF THE NEW COLUMBUS ATLANTIQUE 47 SERIES BY PALUMBO SUPERYACHTS

STRIKING BEACH CLUB WITH INFINITY POOL AND FOLD-DOWN TERRACES

SECOND JACUZZI POOL ON UPPER DECK WITH PANORAMIC SUN LOUNGE

OPEN AIR CINEMA

GENEROUS SUNDECK WITH LOUNGE AND BAR

FLEXIBLE 5-CABIN LAYOUT INCLUDING FULL-BEAM MASTER ON MAIN DECK

EXPANSIVE INTERIOR VOLUMES WITH FLOOR-TO-CEILING WINDOWS

DEDICATED CREW OF 9 ENSURING SEAMLESS 5-STAR SERVICE

Yachts offered are subject to availability. The particulars are believed to be correct but are not guaranteed and may not be used for contractual purposes. Specification provided for information only.



Please note this is a render. Professional photographs of this area will be available soon.



Please note this is a render. Professional photographs of this area will be available soon.



Please note this is a render. Professional photographs of this area will be available soon.



Please note this is a render. Professional photographs of this area will be available soon.



Please note this is a render. Professional photographs of this area will be available soon.



Please note this is a render. Professional photographs of this area will be available soon.



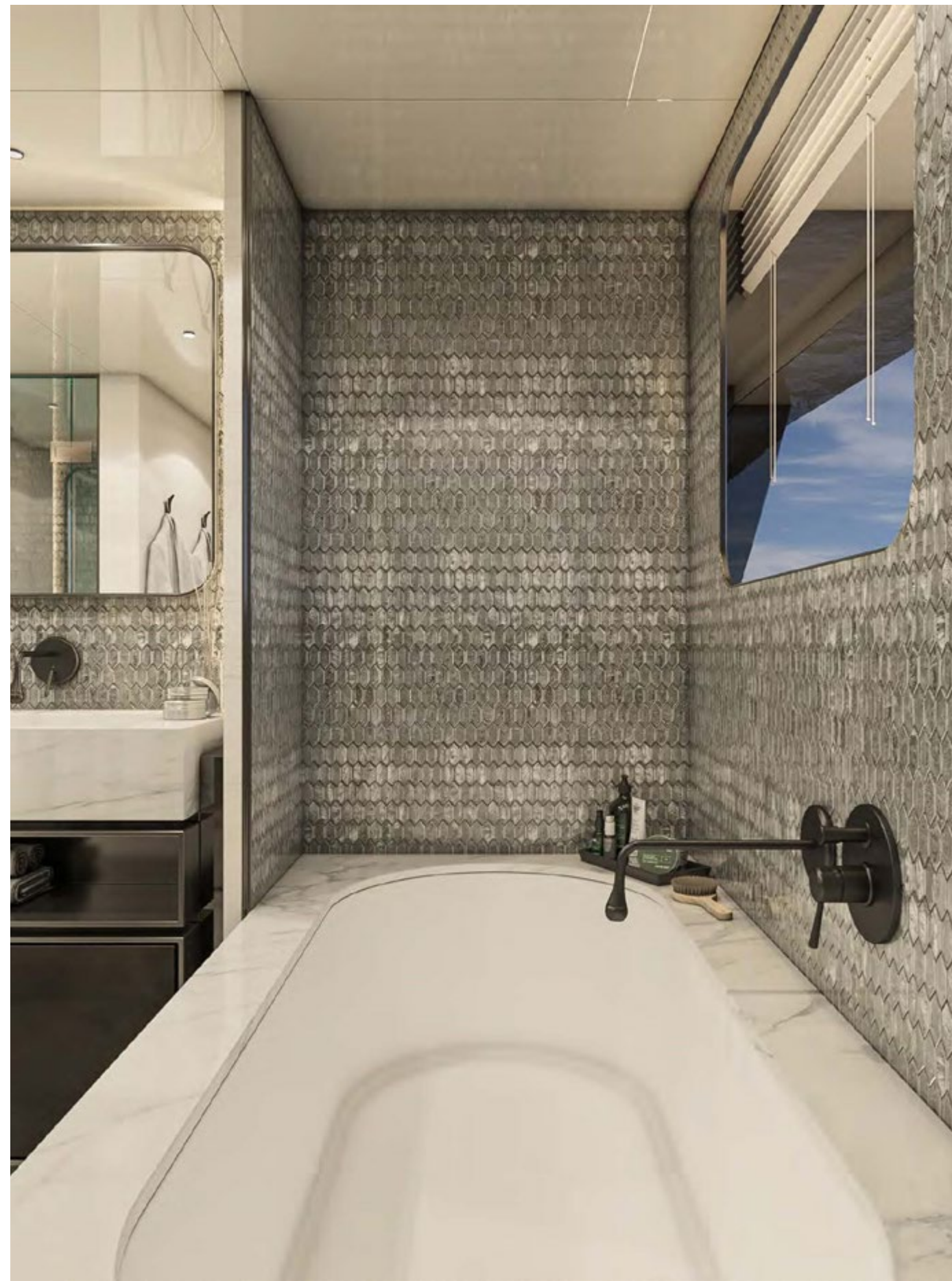
Please note this is a render. Professional photographs of this area will be available soon.



Please note this is a render. Professional photographs of this area will be available soon.



Please note this is a render. Professional photographs of this area will be available soon.

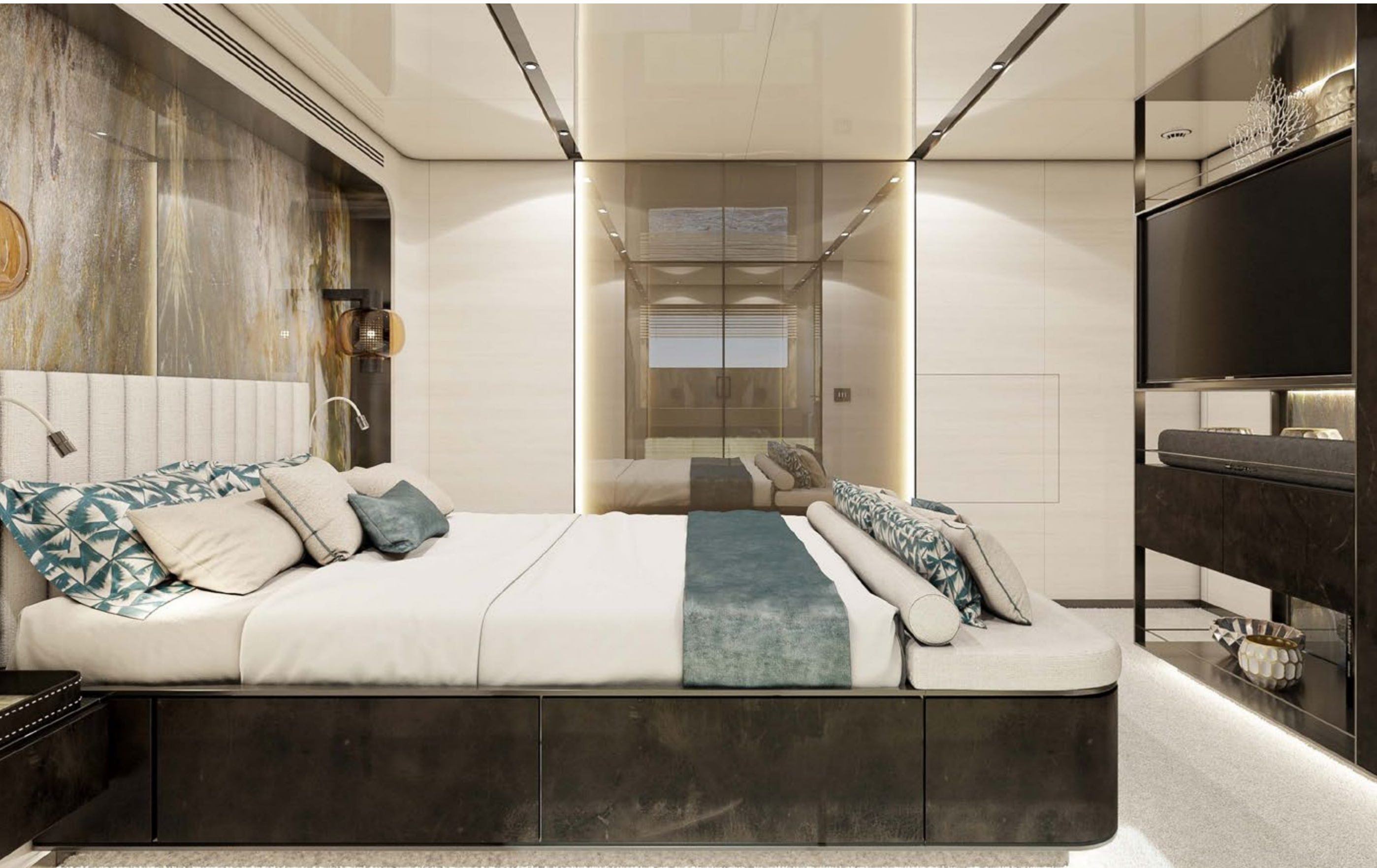




Please note this is a render. Professional photographs of this area will be available soon.



Please note this is a render. Professional photographs of this area will be available soon.



Please note this is a render. Professional photographs of this area will be available soon.



Please note this is a render. Professional photographs of this area will be available soon.



Please note this is a render. Professional photographs of this area will be available soon.

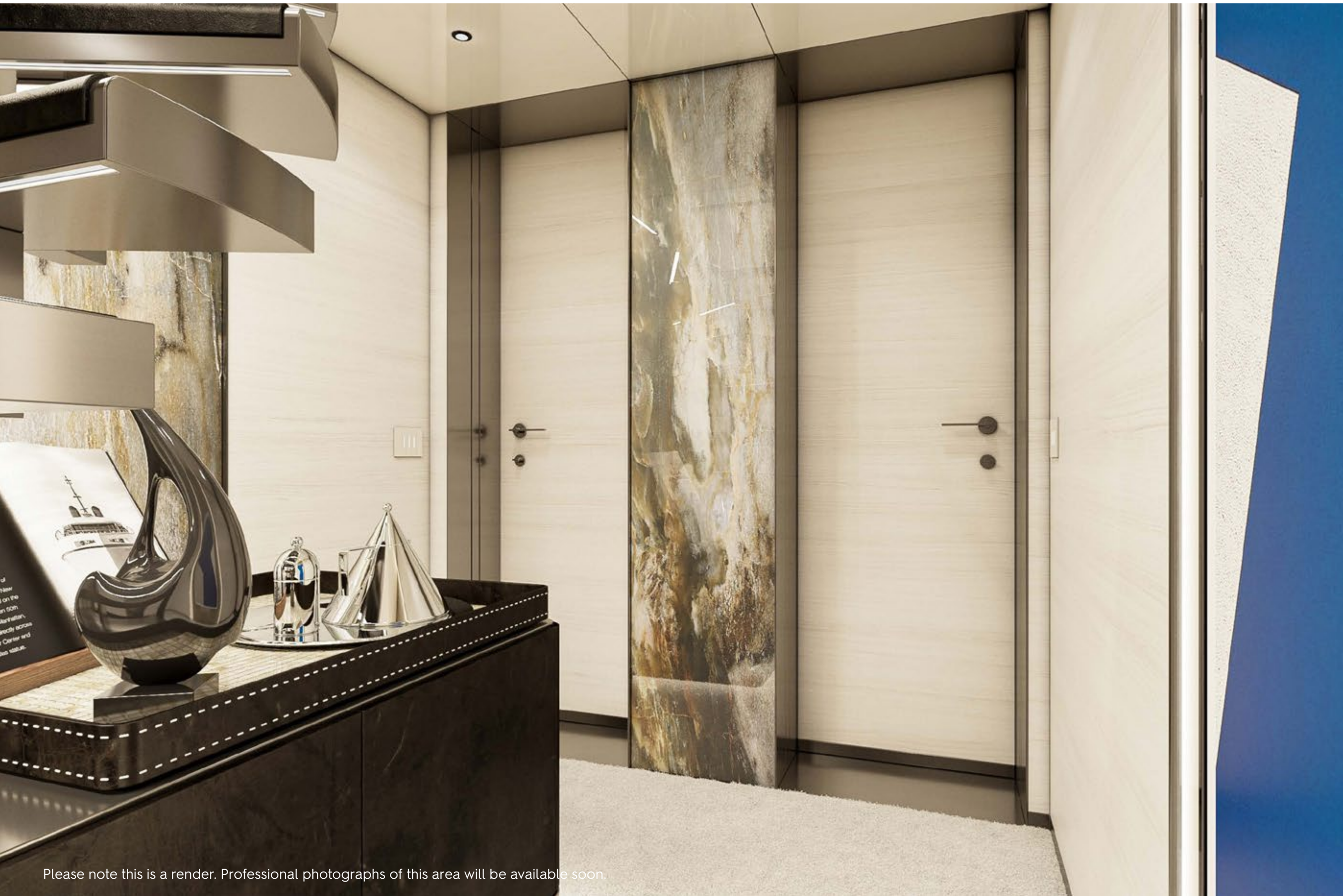


Please note this is a render. Professional photographs of this area will be available soon.



Please note this is a render. Professional photographs of this area will be available soon.





Please note this is a render. Professional photographs of this area will be available soon.



Please note this is a render. Professional photographs of this area will be available soon.



Please note: the next page highlights the selected sundeck furniture.



Please note this is a render. Professional photographs of this area will be available soon.





Please note this is a render. Professional photographs of this area will be available soon.

TENDERS & TOYS*

1 X CASTOLDI JET TENDER 17

1 X RESCUE BOAT ZODIAC 360

2 X JET SKI SPARK SEAFOOD 2025

4 X PADDLE BOARDS JOBE

1 X PLATFORM JOBE

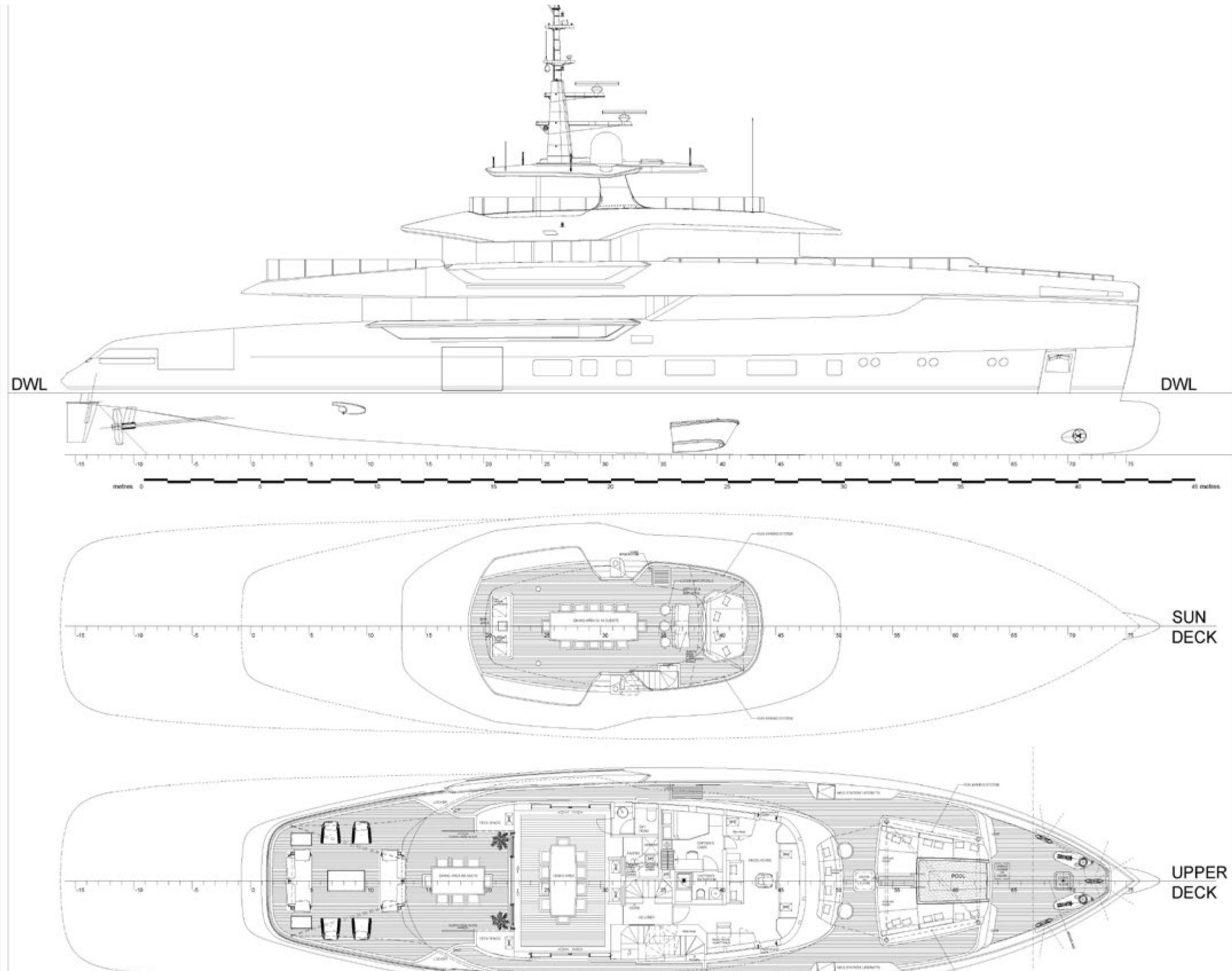
1 X POOL 4X4 JOBE

WAVERUNNER

TOWABLES

* THE FULL LIST OF TOYS WILL BE AVAILABLE
SOON

Yachts offered are subject to availability. The particulars are believed to be correct but are not guaranteed and may not be used for contractual purposes. Specification provided for information only.



YACHT FOR CHARTER | ACQUA CHIARA | 47M / 154' 2" | GENERAL ARRANGEMENT

