

GIGI

CHARTER BROCHURE



OVERVIEW

Navigate the Aegean and immerse yourself in the enchantment of the Greek Isles

The 70 Sunreef Power GIGI is a stunning luxury power catamaran that seamlessly blends elegance, innovation, and superior comfort. Designed by Sunreef Yachts, this exceptional vessel offers an unparalleled charter experience, with thoughtfully designed spaces that maximize relaxation and entertainment.

Accommodating up to eight guests, GIGI features four exquisitely crafted staterooms. The master suite is a private sanctuary, complete with a spacious ensuite bathroom, ensuring the ultimate comfort. The three additional guest cabins offer refined furnishings and serene surroundings, promising a restful retreat after a day at sea.

The main deck saloon is a sophisticated haven, adorned with contemporary décor and elegant wooden accents. Two L-shaped sofas and cozy window-side daybeds create inviting lounging areas, while a well-appointed wet bar at the bow includes a pop-up TV for entertainment. The seamless transition from the saloon to the aft cockpit enhances the indoor-outdoor experience, providing a panoramic dining area with breathtaking sea views.

For adventure seekers, GIGI's oversized aft platform and aft garage house an impressive selection of water toys, ensuring endless fun on the water.





















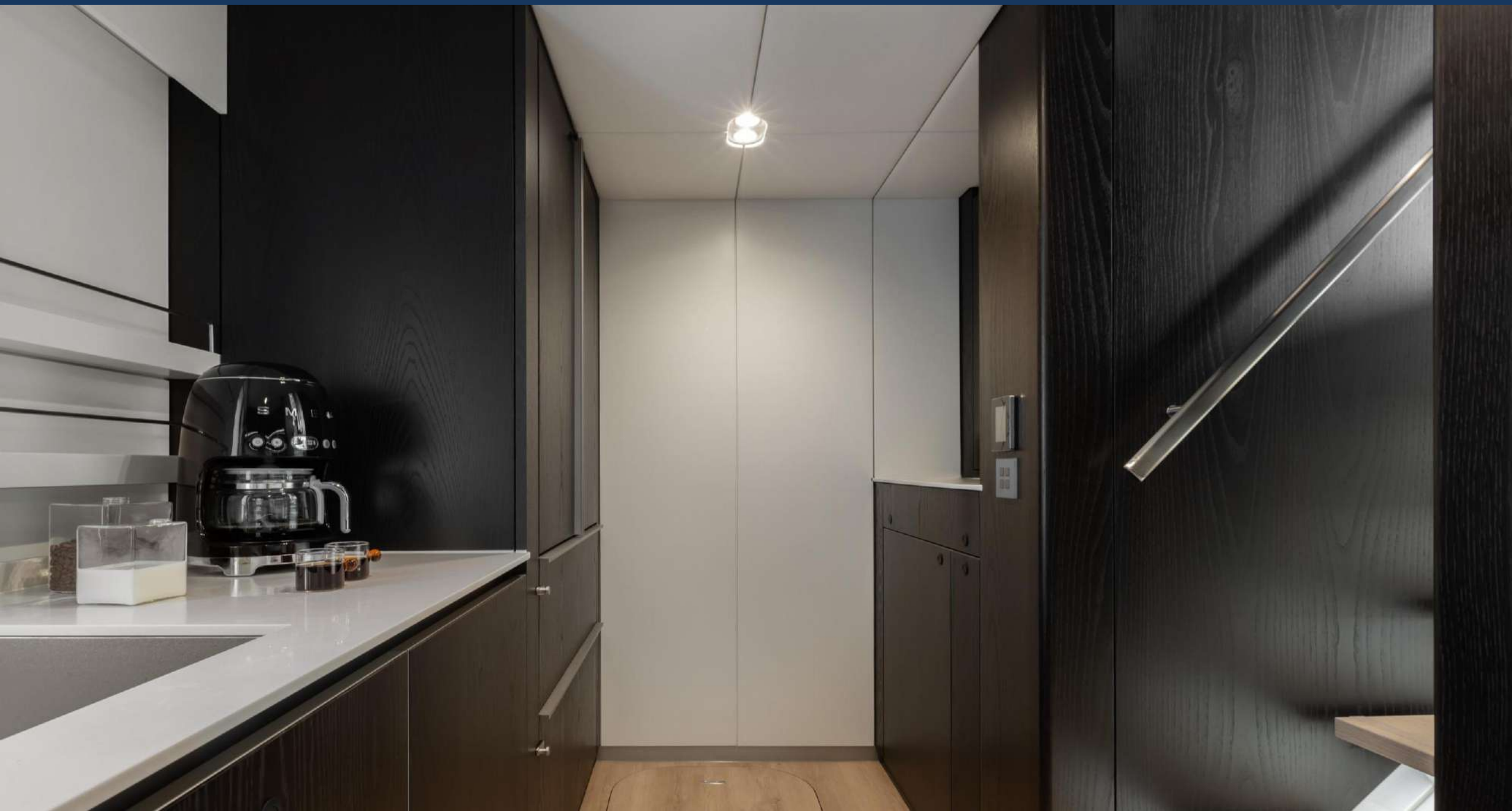


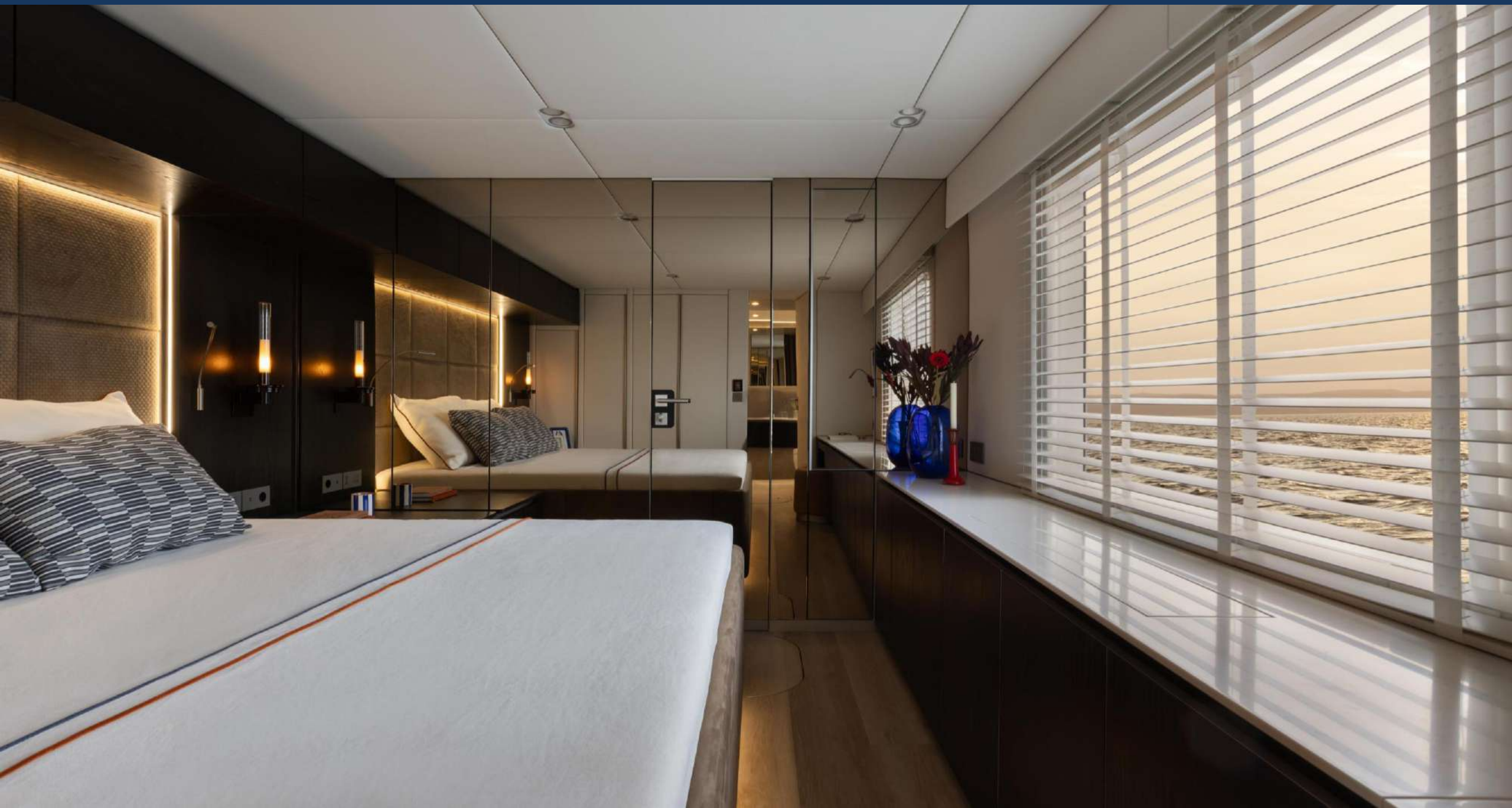


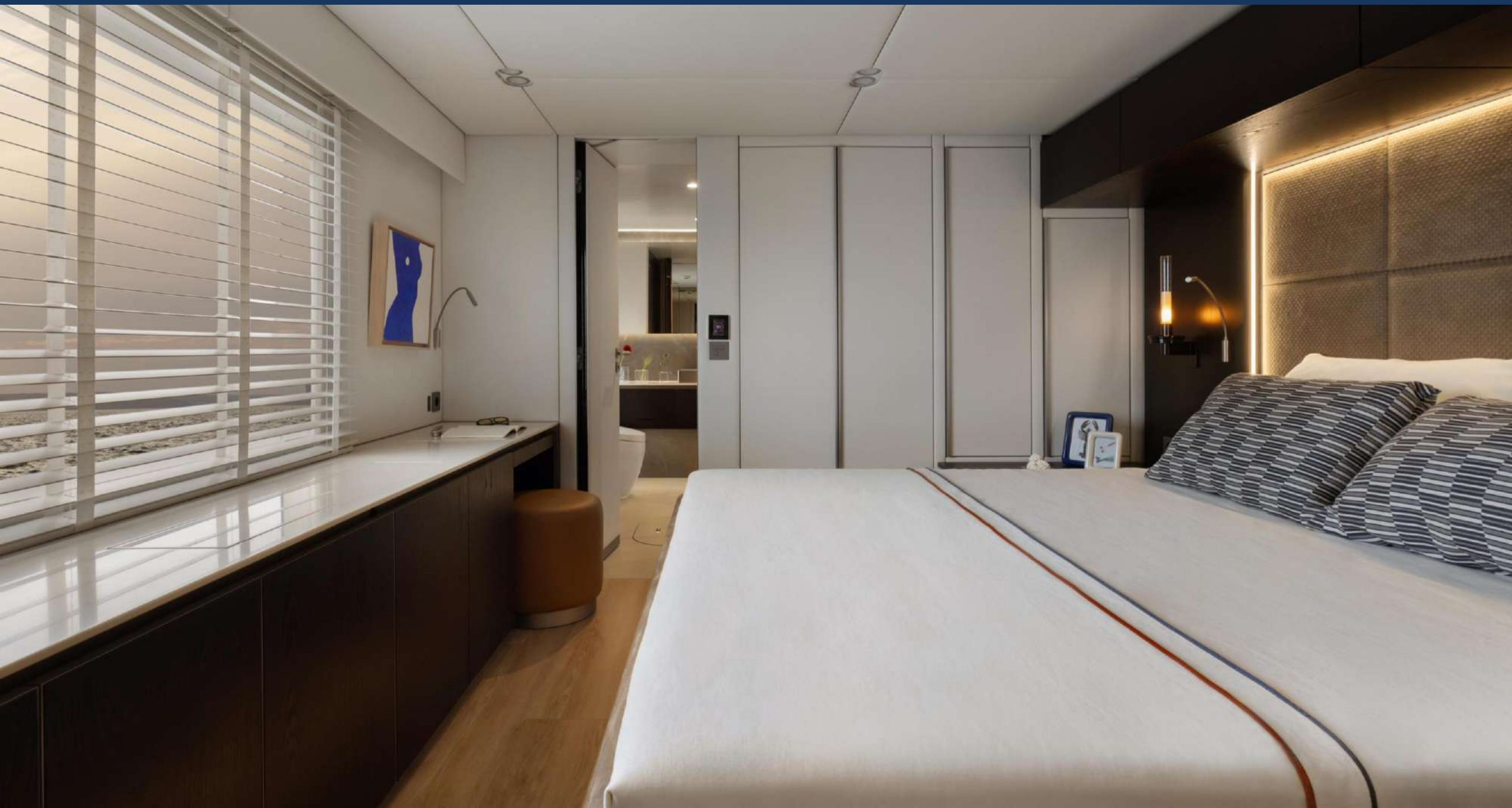






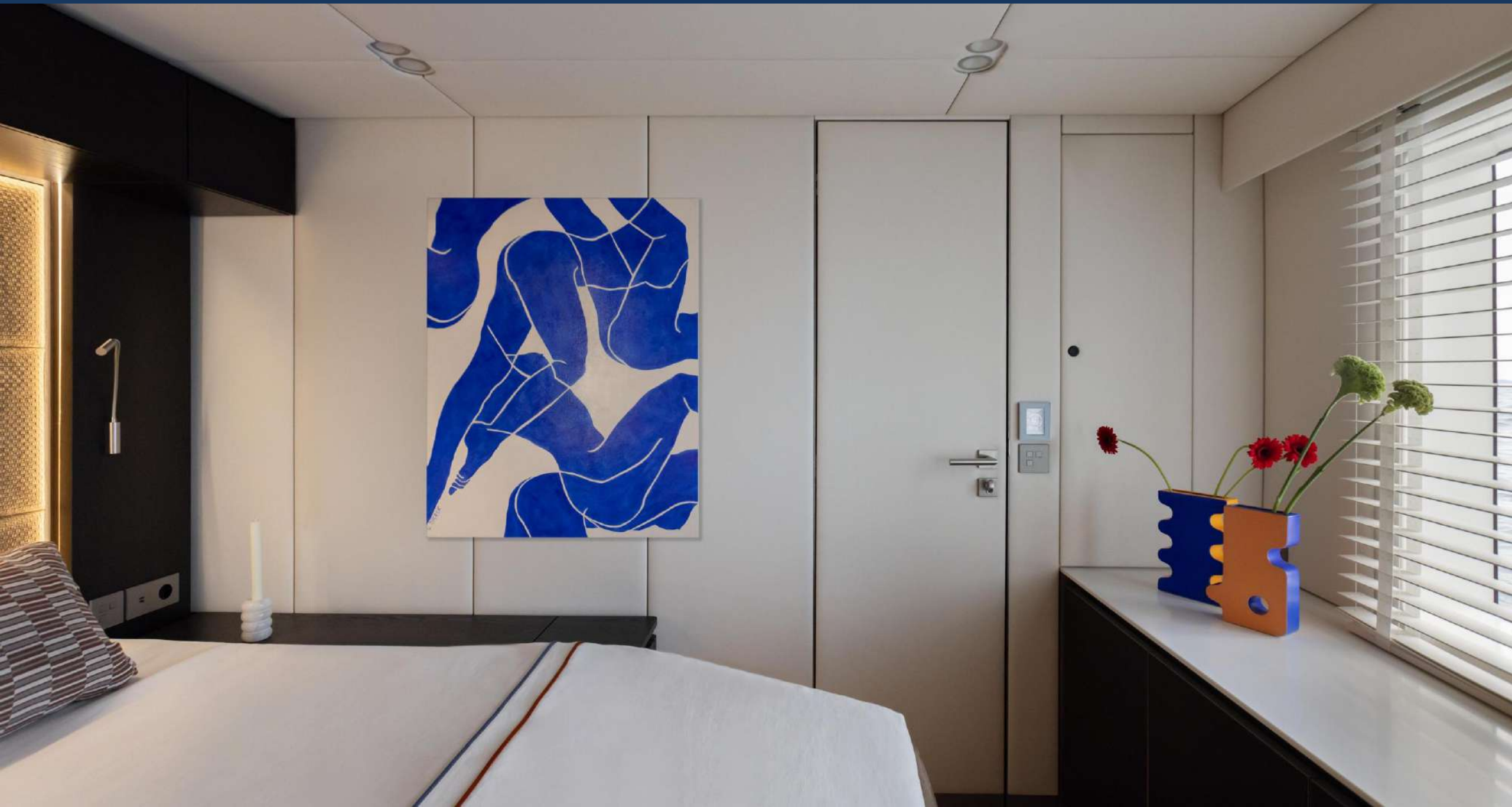
















8 DAYS SARDINIA ITINERARY PROPOSAL

DAY 1	Olbia - Molara	12nm - 1h 30m
DAY 2	Molara - Cala Di Volpe	16nm - 2h 5m
DAY 3	Cala Di Volpe - Caprera	14nm - 1h 50m
DAY 4	Caprera - Budelli	8nm - 1h 5m
DAY 5	Budelli - Spargi	3nm - 25m
DAY 6	Spargi - Porto Cervo	12nm - 1h 35m
DAY 7	Porto Cervo - Figarolo	12nm - 1h 35m
DAY 8	Figarolo - Olbia	9nm - 1h 10m

Peak Season:

June to September

Airport:

Olbia Costa Smeralda Airport (OLB)



8 DAYS SICILY ITINERARY PROPOSAL

DAY 1	Capo d'Orlando - Vulcano Island	22nm - 2h 50m
DAY 2	Vulcano Island - Panarea	14nm - 1h 50m
DAY 3	Panarea - Stromboli Stromboli - Panarea	12nm - 1h 35m 12nm - 1h 35m
DAY 4	Panarea - Salina Island	11nm - 1h 25m
DAY 5	Salina Island - Filicudi	15nm - 1h 55m
DAY 6	Filicudi - Lipari	22nm - 2h 45m
DAY 7	Lipari - Vulcano Island	3nm - 30m
DAY 8	Vulcano Island - Capo d'Orlando	23nm - 2h 55m

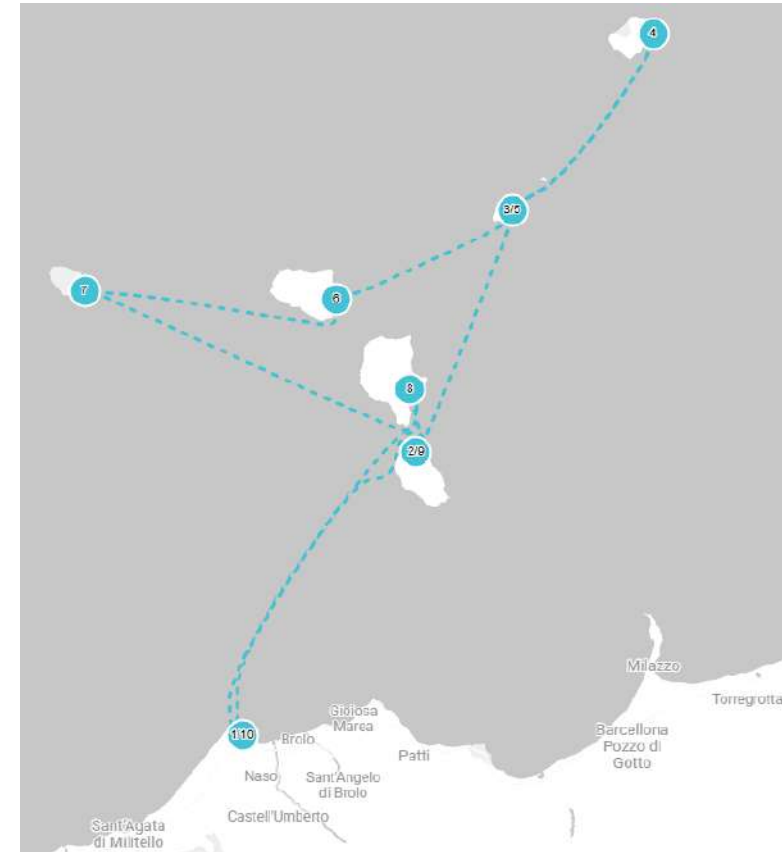
Peak Season:

June to September

Airports:

Reggio Calabria Airport (REG)

Catania-Fontanarossa Airport (CTA)



As yacht charter brokers, we provide the information in this brochure for general guidance. While we aim for accuracy, details, availability, and pricing are subject to change based on negotiations with yacht owners and other considerations. We make no warranties, express or implied, regarding the completeness, reliability, or suitability of the information. Yacht specifications and features may vary, and images are for illustrative purposes only.

This brochure does not constitute a contractual offer, and terms must be confirmed in writing. Charter terms, availability, and conditions may differ. Prospective charterers are advised to conduct their own due diligence and seek professional advice before making decisions based on this information.