

# MOTOR YACHT **PAREAKI II**



MAIORA **126**



## THE YACHT



Enter the luxurious world of Pareaki II, a 39,08m motor yacht refitted in 2023 accommodating up to 12 privileged guests in 6 luxurious cabins. Indulge in unique accommodation, delectable alfresco dining experiences on deck, bask in the warm embrace of the sun while relaxing in the jacuzzi. Inside, get ready to be captivated by the contemporary interior adorned with panoramic windows & plush furnishings.

### KEY FEATURES

BRAND NEW STABILIZERS UNDERWAY & ZERO SPEED / DECK JACUZZI /  
REFITTED IN 2023 / EXTENDED SWIM PLATFORM / ARRAY OF WATER TOYS /  
UPPER DECK WITH FULL SHADING OPTION FOR MAXIMUM COMFORT  
WHILE CRUISING AND AT ANCHOR



M/Y **PAREAKI II**

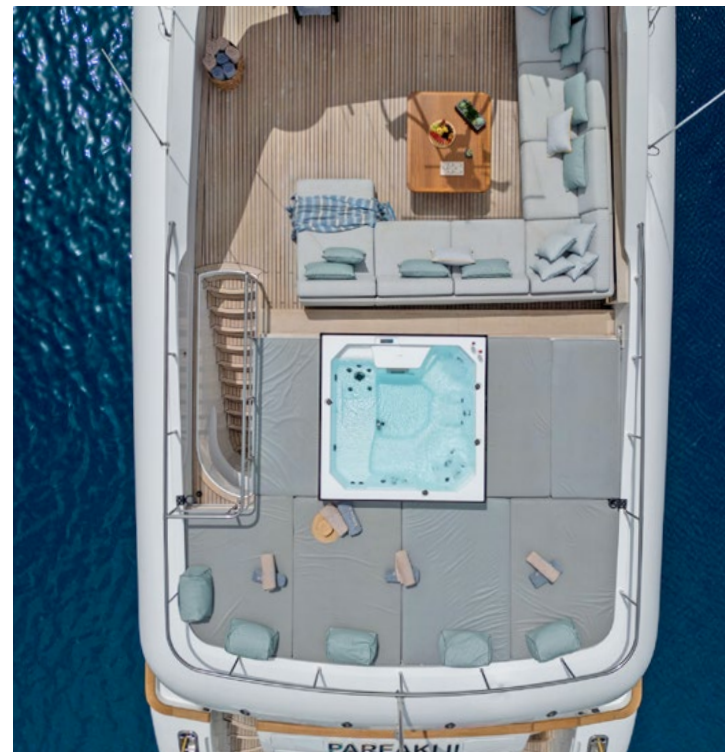


## AFT DECK & SUNDECK



M/Y **PAREAKI II**

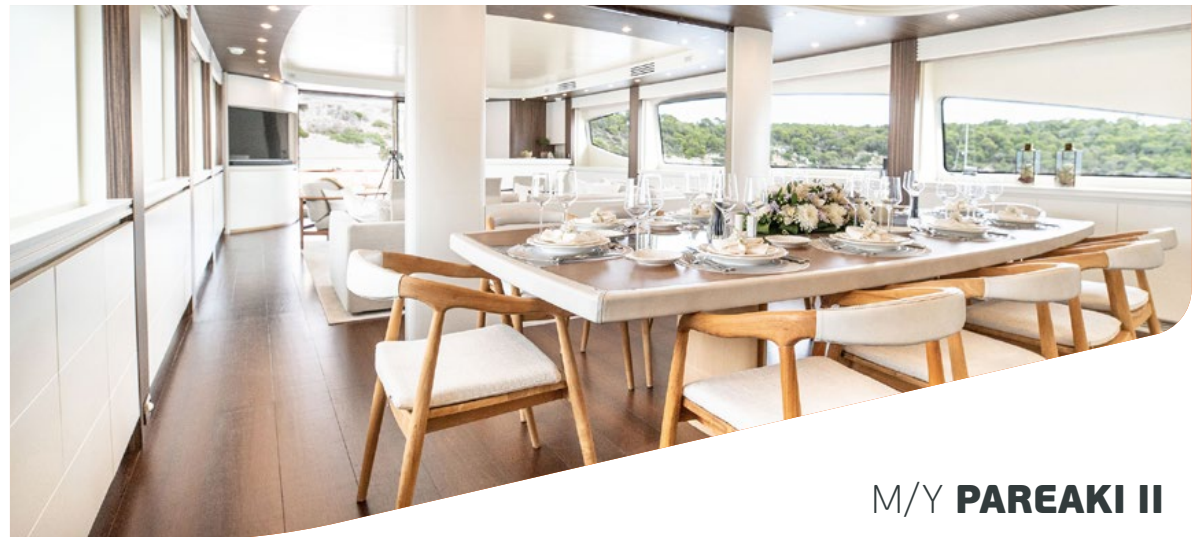




M/Y **PAREAKI II**



## SALOON & DINING AREA



M/Y **PAREAKI II**



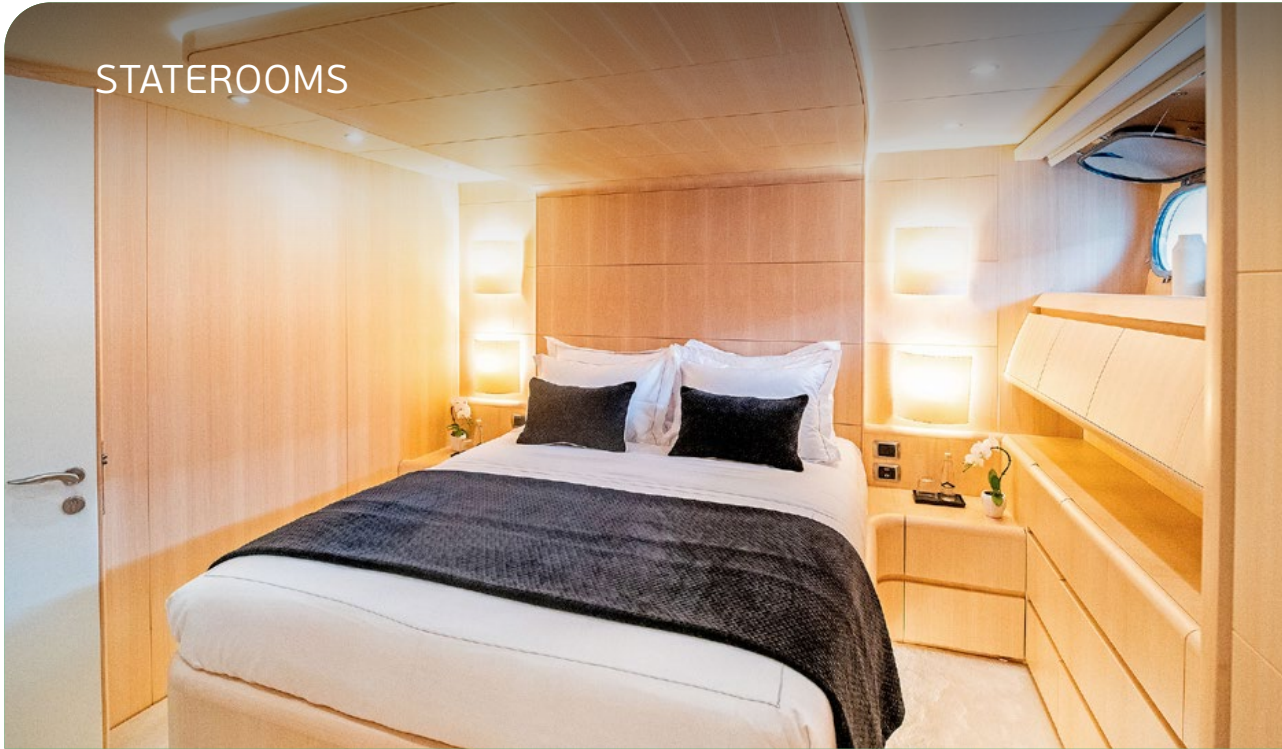
## STATEROOMS



M/Y **PAREAKI II**



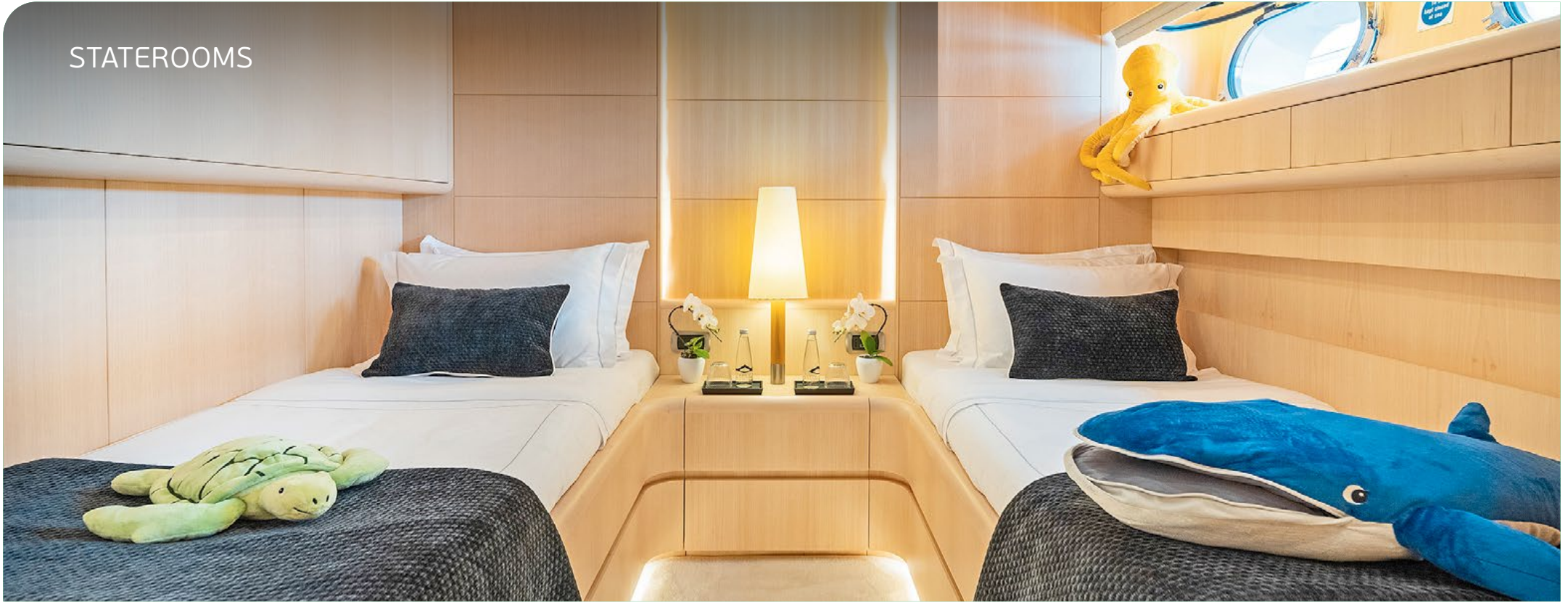
## STATEROOMS



M/Y **PAREAKI II**



## STATEROOMS



M/Y **PAREAKI II**



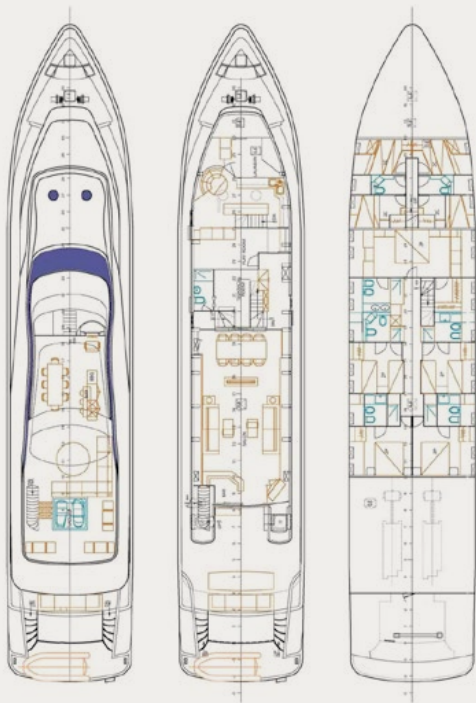
## WATER TOYS



M/Y **PAREAKI II**



# SPECIFICATIONS



Builder/Type:	<b>Maiora 126</b>	
Built/Refit:	<b>2006 / 2023</b>	
L.O.A:	<b>39,08m</b>	<b>126,10ft</b>
Beam:	<b>7,60m</b>	<b>24,70ft</b>
Draft:	<b>2,68m</b>	<b>4,80ft</b>
Main Engines:	2x <b>3700hp</b> MTU	
Generators:	<b>45Kw</b> & <b>50Kw</b> Onan	
Eco speed:	<b>16knots</b> - <b>500lt/h</b>	
Cruising speed:	<b>21knots</b> - <b>900lt/h</b>	
Maximum speed:	<b>29knots</b>	

**Accommodation:** 12 guests in 1 Master, 2 VIPs, 2 Twin & 1 Single bed cabin with a pullman berth, all fully air-conditioned with en-suite facilities

**Crew consisting of 8:** Captain, Engineer, Chef, Bosun, 2x Deckhand, Chief Stewardess & Stewardess in separate compartments

**General Amenities:** 5x TV's 32' Guest Cabins & Tv 55' in the Main deck, Salon Stereo Surround Sound System, 5 stages HEOS App, Office TV 32, Jacuzzi at Fly Bridge, Upper deck with full shading option, BBQ

**Tender & Toys:** Zodiac RIB YL470 DL 4,70m with Mercury 100hp, Jet ski 2 seated spark Sea Doo, 1x set kid's water skis, 1x set adult's water skis, Jobe hotseat (1 seater), Jobe chaser towable (3 seater), 2x Stand up paddleboards, 2x Sea Bob, efoil Fliteboard Pro Carbon Gold, Awake Jetboard, Dive mask, Extended Inflatable swimming platform, Electric scooter

M/Y **PAREAKI II**